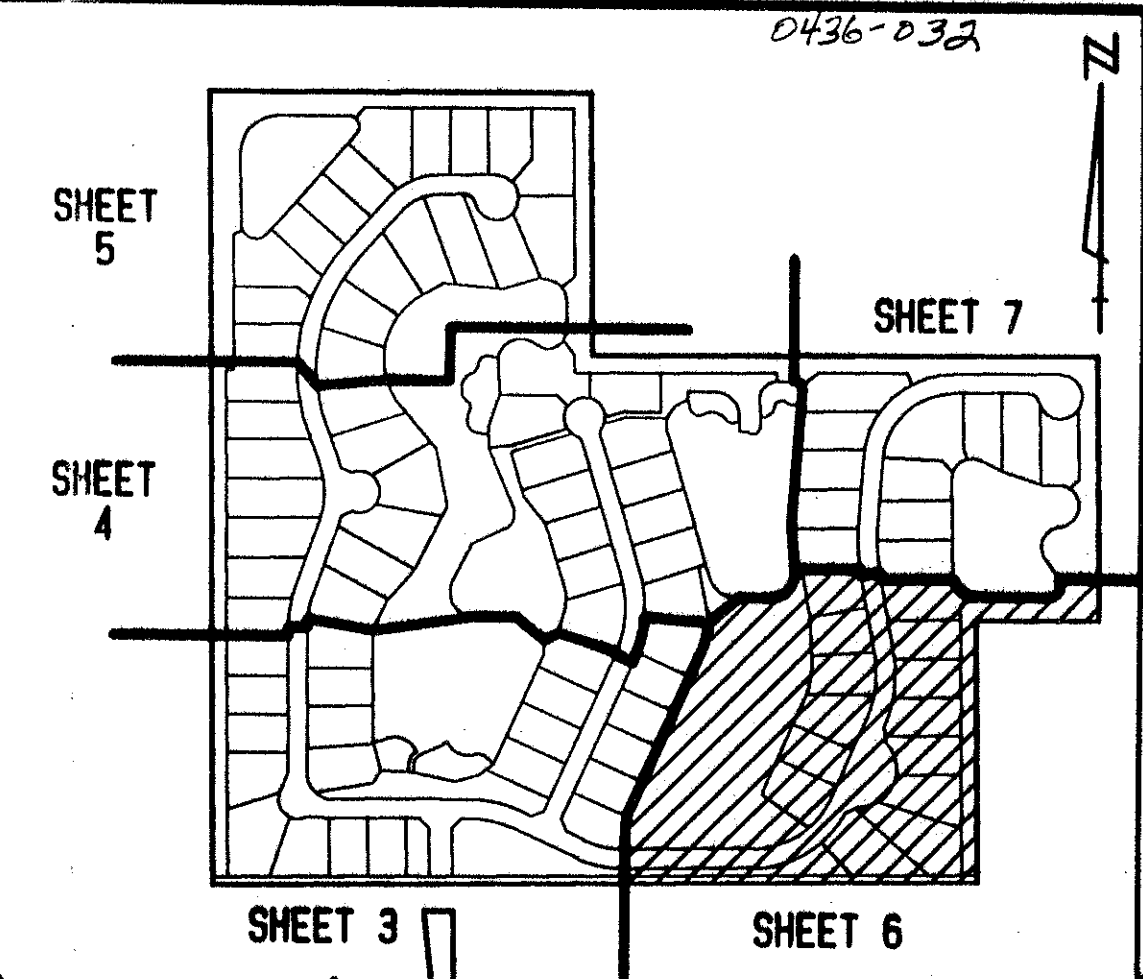


STATE OF FLORIDA  
COUNTY OF PALM BEACH  
THIS PLAT WAS FILED FOR  
RECORD \_\_\_\_\_ DAY OF \_\_\_\_\_  
AD. 1993 AND DULY RECORDED  
IN PLAT BOOK \_\_\_\_\_ ON PAGES  
\_\_\_\_\_ AND \_\_\_\_\_  
DOROTHY H. WILKEN, CLERK  
BY: \_\_\_\_\_, D.C.

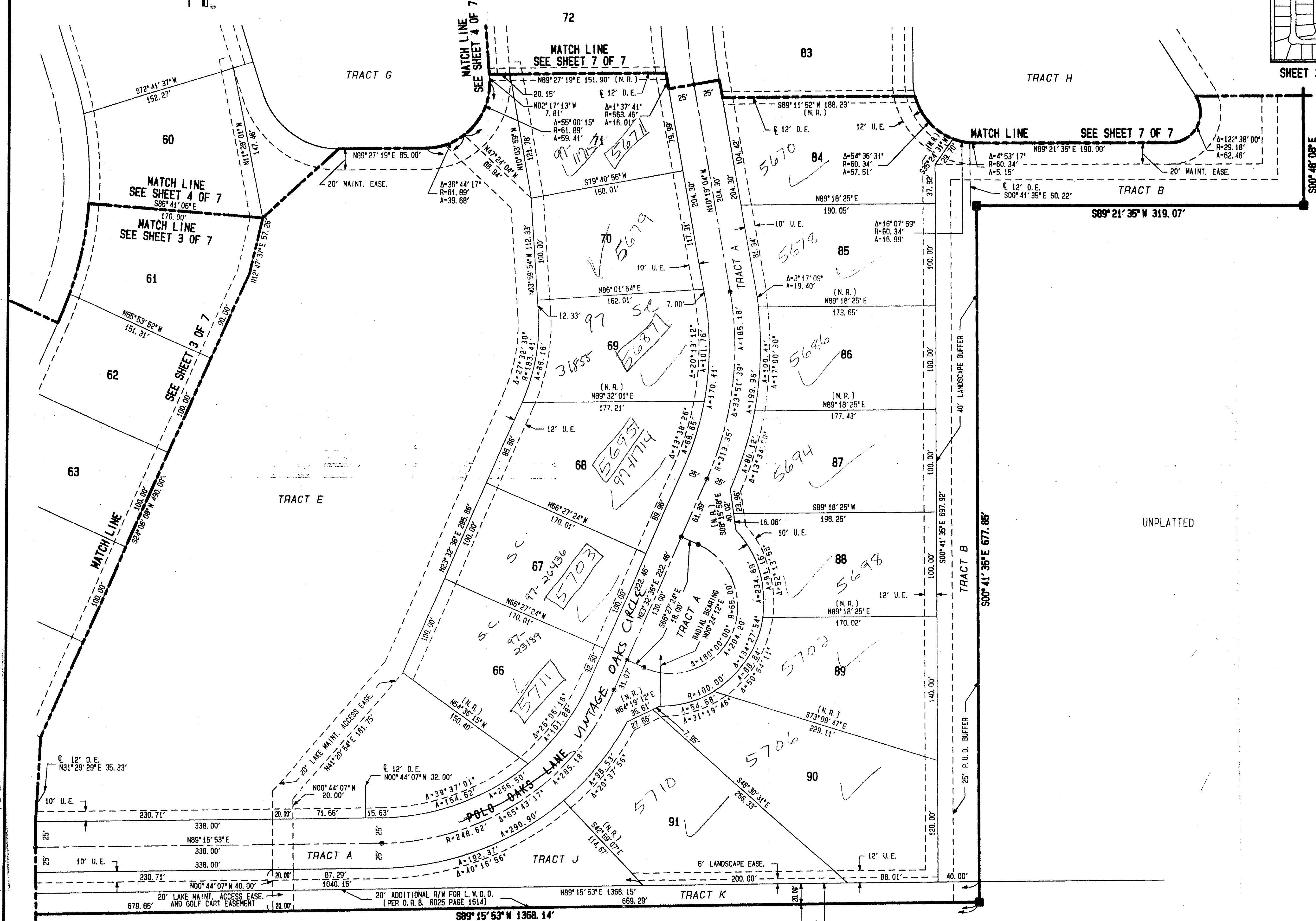
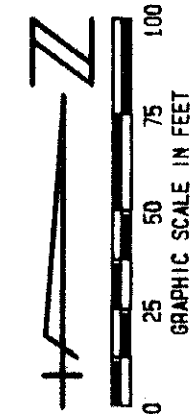
CIRCUIT COURT SEAL

# THE POLO OAKS

PART OF THE POLO CLUB P. U. D.  
SITUATE IN SECTION 26, TOWNSHIP 46 SOUTH, RANGE 42 EAST  
PALM BEACH COUNTY, FLORIDA  
AUGUST, 1993 SHEET 6 OF 7



SHEET INDEX MAP  
NOT TO SCALE



71  
73  
75  
77  
79  
81  
83  
85  
87  
89  
91

POLO OAKS  
71  
73  
75  
77  
79  
81  
83  
85  
87  
89  
91

PET. 84-71  
ALLOC. #0001

0436-032

7/1/22

SHEET 6 OF 7

L.W.D.D. L-37 CANAL  
(70' R/W)  
O.R.B. 5290 PAGE 1264

S89°15'53" N 1368.14'  
... 1993.55' (TOTAL) ...

MOCK, ROOS & ASSOCIATES, INC.  
5720 CORPORATE WAY, WEST PALM BEACH, FL 33407 (407) 683-3113

SCALE: 1" = 50'	DATE: JUNE 1993
P.A. NO. 93-137.00	DWG. NO. 46-42-26-6

THE POLO OAKS  
PART OF "THE POLO CLUB P. U. D."  
SECTION 26, TOWNSHIP 46 SOUTH, RANGE 42 EAST